

RETAIL OPPORTUNITIES AT PARKSIDE PLAZA

Archibald Ave & E Grand Park St, Ontario, CA 91761



ROXY KLEIN

Vice President, Retail Leasing & Sales
O: 909.576.4259 | C: 909.576.4259
roxy@progressiverep.com
DRE #01264392

PAUL SU

Senior VP, Retail Leasing & Sales
O: 909.230.4500 | C: 626.417.4539
paul.su@progressiverep.com
DRE #01949696

Another Quality Project by:

Lewis Retail Centers
A Member of the Lewis Group of Companies

PROGRESSIVE
REAL ESTATE PARTNERS

Presented By



ROXY KLEIN

Vice President, Retail Leasing & Sales

T 909.576.4259 | **C** 909.576.4259

roxy@progressiverep.com

CalDRE #01264392



PAUL SU

Senior VP, Retail Leasing & Sales

T 909.230.4500 | **C** 626.417.4539

paul.su@progressiverep.com

CalDRE #01949696

Confidentiality & Disclaimer

EACH PARTY SHALL CONDUCT ITS OWN INDEPENDENT INVESTIGATION AND DUE DILIGENCE

Any party contemplating a lease or sale transaction is urged to verify all information and to conduct their own inspections and investigations including through appropriate third party independent professionals selected by such party.

All financial data, building information, zoning information, demographics, and other information that a tenant or buyer may depend upon for making their business decisions should be verified and confirmed by the party including by obtaining and reading applicable documents and reports and consulting appropriate independent professionals. Any information contained in this marketing brochure was obtained from sources that we deemed reliable. While we do not doubt its accuracy, we do not make any guaranty, warranty, or representation about the accuracy of the information contained herein.

Progressive Real Estate Partners does not serve as a financial or business advisor to any party regarding any proposed transaction.

Legal questions should be discussed by the party with an attorney. Tax questions should be discussed by the party with a certified public accountant or tax attorney. Title questions should be discussed by the party with a title officer or attorney. Questions regarding the condition of the property and whether the property complies with applicable governmental requirements should be discussed by the party with appropriate engineers, architects, contractors, other consultants and governmental agencies.

Materials and information from any source, whether written or verbal, that may be furnished for review are not a substitute for a party's active conduct of its own due diligence to determine these and other matters of significance to such party.

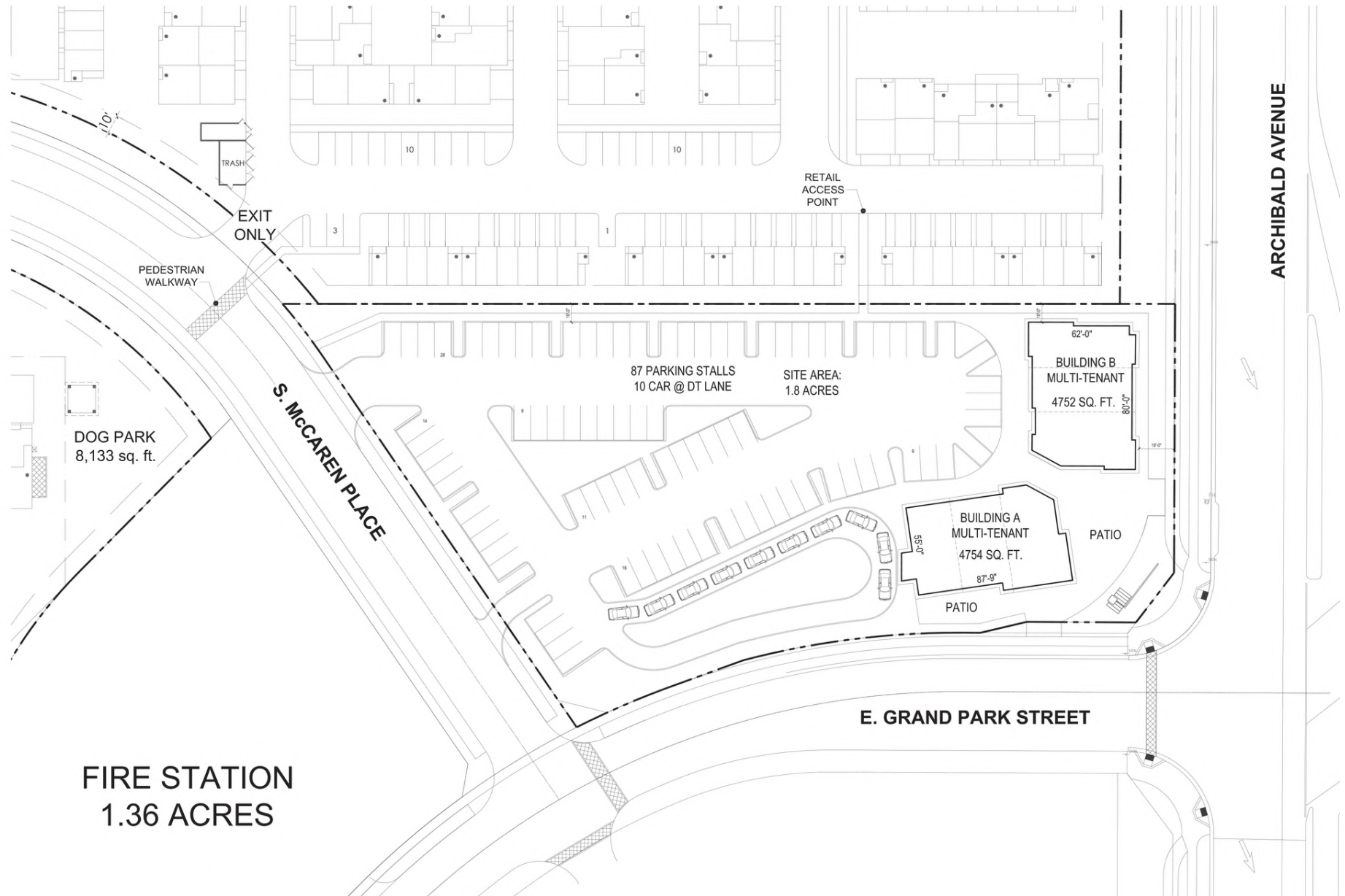
PROPERTY OVERVIEW



HIGHLIGHTS

- Retail lease opportunities are available at Parkside, a neighborhood within Ontario Ranch.
- Ontario Ranch is a beautifully master-planned residential resort-style community with 46,000 new homes in fifteen different neighborhoods.
- The growing population in Ontario Ranch and the surrounding areas has increased demand for retail products and services.
- The site is located directly across from The Ontario 'Great' Park, which is currently under construction and is approximately 340 acres with a length of 3.7 miles and is envisioned as a focal point for the region.
- Ontario Ranch is located near the 60 and 215 freeways, adjacent to Eastvale. Parkside community is located on S. Archibald Avenue with 39,320 CPD at the intersection of Ontario Ranch Rd. & S. Archibald Ave.
- Excellent demographics, with approximately 107,193 people currently residing within a three-mile radius with an average income of \$138,039.
- High median home values of \$1,171,996 within a three-mile radius.

CONCEPTUAL SITE PLAN



THE GREAT PARK

The Ontario 'Great' Park is located in Ontario Ranch and is approximately 340 acres with a length of 3.7 miles and encompasses roughly 400 acres, extends over 3-1/2 miles in an east-west direction, and has varying widths anticipated between 280 to 1,600 feet. The Ontario 'Great' Park is envisioned as a focal point for the region, serving the City of Ontario's recreational and space needs.

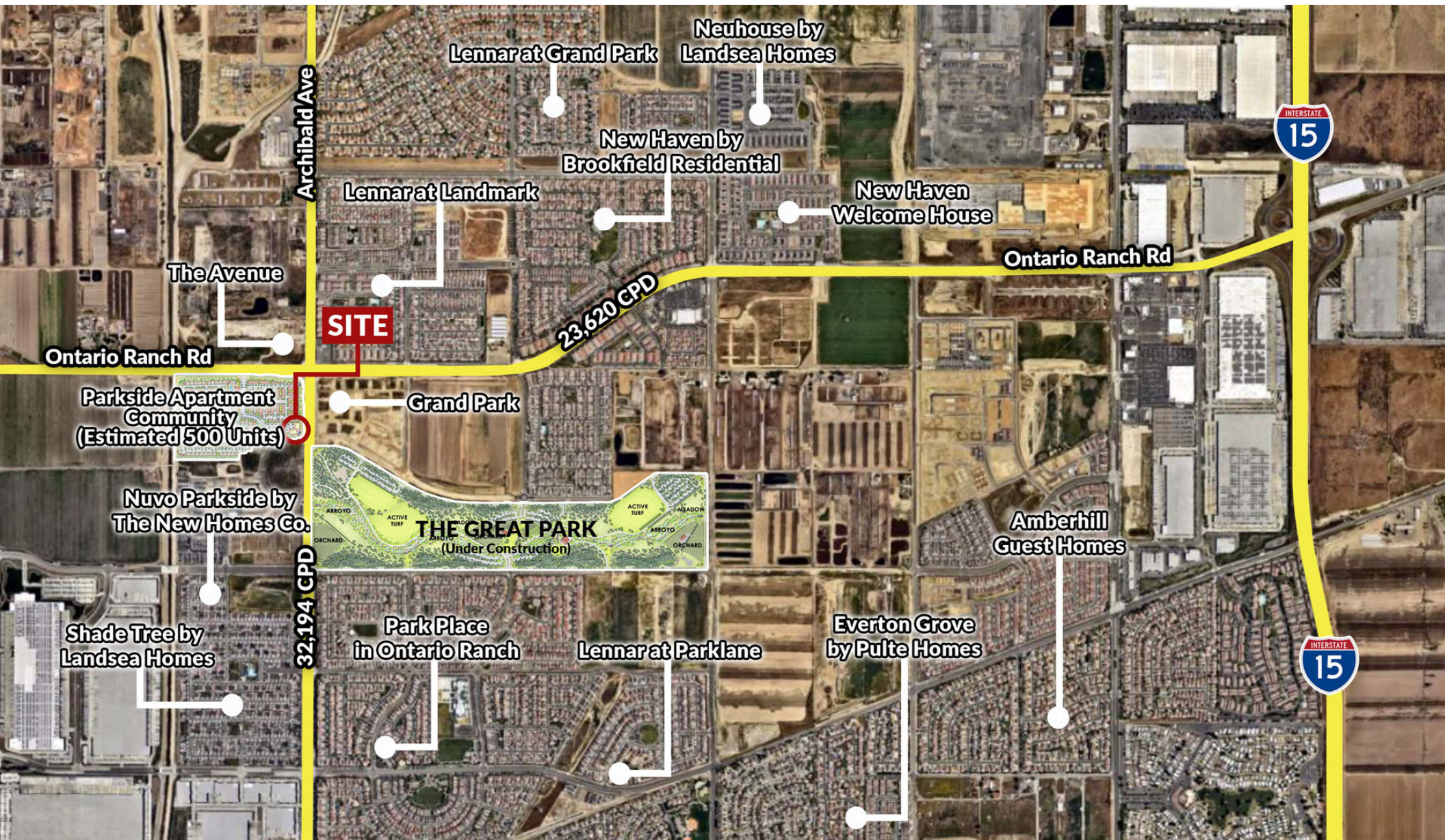
Phase 1 is approximately 130 acres and occurs within the eastern portion of Ontario Ranch, Grand Park Street to the north, Eucalyptus Avenue to the south, Haven Avenue on the east, and Archibald Avenue on the west. Though it will be open to all residents, The Great Park, the working name, is conceived as a swath of open space, trails, cultural and recreational uses for the residents of Ontario Ranch. The design for phase I includes a trails network that would follow a new arroyo or river channel, meadows, fields and an amphitheater. The central arroyo would be the focal point of the park. It would carry storm water through the park and also be used to seep captured water into the ground for storage. Meadows could be ideal for sports fields and leisure sports activities, the report states.

In later phases, development would include athletic fields, places for historical and cultural exhibits, museums, community facilities and areas for social gatherings, such as a farmers markets and pop-up dining spaces.

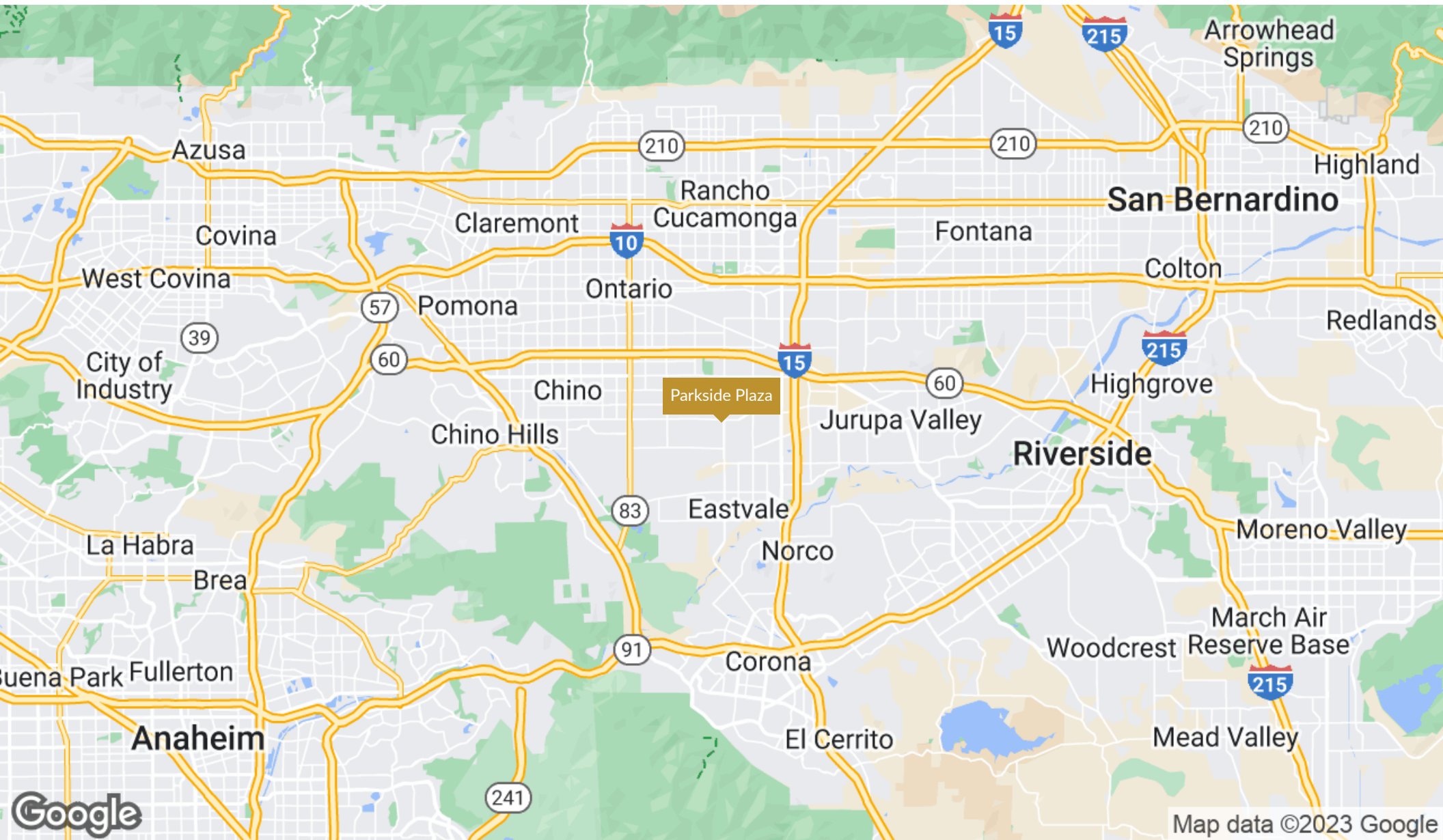
For more information, [CLICK HERE](#)



RESIDENTIAL MAP



REGIONAL MAP



RETAILER MAP



TRADE AREA PHOTOS



The Parkhouse at Park Place Ontario Community Center

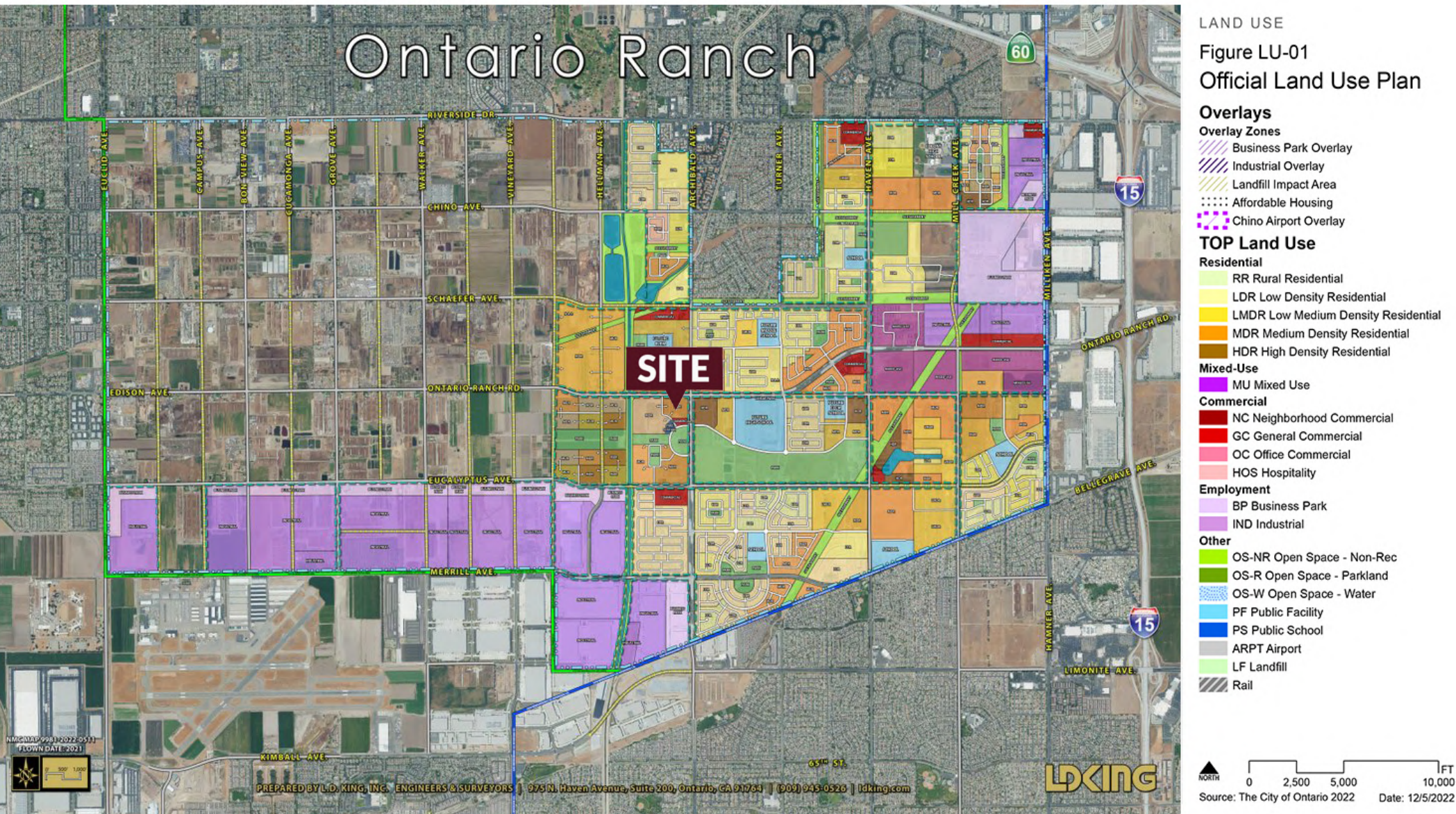


Ontario Fire Station No. 9



Celebration Park South

LIMITED RETAIL COMPETITION





TRADE AREA INFORMATION

CITY OF ONTARIO

- The City of Ontario is home to 177,000 residents, and is predicted to double by within the next 15 years. To help accommodate this growth, the City has been committed to drafting plans to continue developing mixed-use urban lifestyle districts in the City's major town centers.
- Ontario's economy continues to expand due to its central geographical location and the City of Ontario's pro-growth approach to attracting businesses to the area. The close proximity of Ontario International Airport with over 11,500 passengers daily makes the Ontario Business District desirable for corporations seeking a Southern California presence that is easily accessible from anywhere in the world.
- Ontario is also adjacent to the City of Eastvale which has been ranked by the Fortune Magazine as the #1 best place to live in California where many families and young professionals live and raise their families

ONTARIO RANCH

- One of Ontario's development project helping to fuel the growth is Ontario Ranch. Ontario Ranch is a master-planned residential community from Brookfield Residential, Lennar, GDC - RCCD, and Lewis Community Developers which covers approximately 8,000 acres and 13 square miles and offers approximately 46,000 new homes in fifteen different neighborhoods providing a variety of housing options community centers and schools for all working classes.
- With Ontario being ranked the 4th fastest growing in California and is among the top 40 fastest growing mid-sized cities in the U.S. A visionary model for California Growth, Ontario Ranch is the first gigabit community in southern California, and will feature ultra-high bandwidth home-data services, plus an expansive park and trail system, new schools and independent sources of water.

INFOGRAPHICS 3-MILE RADIUS



\$138,039

**2022 Average
Household
Income (Esri)**



107,193

**2022 Total
Population (Esri)**

DEMOGRAPHICS

POPULATION

	1 mile	3 miles	5 miles
2022 Total Population	10,749	107,193	230,971
2022 Median Age	35.2	33.4	33.7
2022 Total Households	3,157	30,162	61,824
2022 Average Household Size	3.4	3.53	3.6

INCOME

2022 Average Household Income	\$136,664	\$138,039	\$133,706
2022 Median Household Income	\$109,820	\$110,525	\$107,243
2022 Per Capita Income	\$39,291	\$38,203	\$36,067

BUSINESS SUMMARY

2022 Total Businesses	64	2,168	7,656
2022 Total Employees	398	18,021	80,045

